

HENLEY SYMPHONY ORCHESTRA

The Hexagon Reading



Dominic Sedgwick

Baritone

Ian Brown

Conductor

Mahler

Songs of a Wayfarer

Beethoven

Symphony No. 9 in D minor 'Choral'

Eline Vandenheede soprano

Glen Cunningham tenor

Leila Zanette mezzo-soprano

Dominic Sedgwick baritone

Sunday 13 March 2022, 7.30pm

Tickets: email hsoboxoffice@gmail.com or 07726 459261

£22, £18, £14; U16s/students half price; 1 child free with paying adult (£18 and £14 tickets); Groups: 1 in 8 free.

Or via Reading Arts: 0118 960 6060 or www.readingarts.com (booking fee applies)

www.henleysymphonyorchestra.co.uk

Henley Symphony Orchestra is a Registered Charity No. 271849

 **Reading**
Borough Council

HENLEY SYMPHONY ORCHESTRA

From the first concert held in a borrowed marquee in Shiplake, and now in its 52nd season, HSO has gone from strength to strength, attracting some 50 players from across the Thames Valley. Under the guidance of Ian Brown, the orchestra promotes an annual season of four concerts featuring internationally acclaimed artists. The aim is to provide high-quality music-making at affordable prices and to give local musicians a chance to perform the great classical orchestral repertoire to a high standard.

For its 22nd Hexagon concert, HSO is delighted to welcome British baritone Dominic Sedgwick to perform Mahler's deeply moving *Songs of a Wayfarer*. Dominic is a recent graduate of the prestigious Jette Parker Young Artist Programme at the Royal Opera House. His 2021/22 season sees a return to the Royal Opera as Marullo in a new production of *Rigoletto* and debuts for Théâtre Luxembourg and Grange Park Opera. Dominic was awarded the Audience Prize in the inaugural 2017 Grange Festival International Singing Competition.

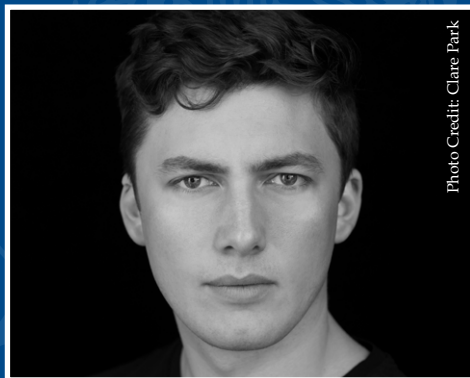
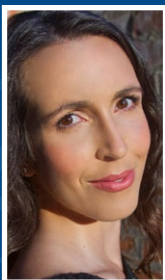


Photo Credit: Clare Park



Eline Vandenheede
soprano



Leila Zanette
mezzo-soprano



Glen Cunningham
tenor

For the first time in its 52 years, HSO is performing Beethoven's great *Symphony No. 9, 'Choral'*. This potent statement of brotherhood and fellowship reaches a glorious affirmation in its final movement when the orchestra is joined by singers from Reading Bach Choir, Henley Choral Society and the Glass Ensemble. The soloists are supported by Opera Prelude, a Henley-based charity which supports young singers at the start of their careers.

Come and join us!

The Hexagon is in the centre of Reading, ten minutes' walk from the station or well signed if coming by car. Sat Nav postcode is RG1 7TQ. Car parking is in the Broad Street Mall, Oracle shopping centre or Q-Park Chatham Street car parks (<http://www.readingarts.com/hexagon/your-visit/how-find-us>) There is parking for disabled patrons outside the Hexagon stage door. Wheelchair spaces are available in the stalls, but please contact the Hexagon on 0118 960 6060 to book one of these. The spacious theatre follows all current requirements for the safety of its patrons.

www.readingarts.com/thehexagon